

## PLC (bare fiber) Splitter Specification

### Application:

Planar light wave circuit (PLC) splitter is a type of optical power management device that is fabricated using silica optical waveguide technology. It features small size, high reliability, wide operating wavelength range and good channel-to-channel uniformity, and is widely used in PON networks to realize optical signal power splitting. Ribbon fiber, compact design.

PLC Splitter 1\*2, 1\*4,1\*8,1\*16,1\*32,1\*64, without connectors, input port fiber length 1.5m, output port fiber length 1.5m,250um diameter, G657A1 fiber.

### Feature:

- ✧ Small size and aesthetic appearance.
- ✧ Installation quick, reliable performance, stability.
- ✧ Employ integrated optic production process.
- ✧ Wide operating wavelength range.
- ✧ Good uniformity, in particular the application of PON.
- ✧ Optical fiber: G.657A1 Fiber
- ✧ Meet GR-1209-CORE and GR-1221-CORE requirements.



Note: the picture provides a reference only.

### Technical characteristics for splitter:

| Type   | 1X2  | 1X4   | 1X8   | 1X16  | 1X32  | 1X64  |
|--|--|-------|-------|-------|-------|-------|
| Model No.  | <b>MCR-PLC-Bare Fiber 1x2/4/8/16/32/64</b> |       |       |       |       |       |
| Channel wavelength(nm)   | 1260-1650nm                                |       |       |       |       |       |
| Test Wavelength  | 1310/1550nm                                |       |       |       |       |       |
| Insertion loss(dB) (±0.3)  | ≤3.5                                       | ≤7.0  | ≤10.2 | ≤13.5 | ≤16.6 | ≤21.1 |
| Loss Uniformity (dB)   | ≤0.6                                       | ≤0.7  | ≤1.0  | ≤1.2  | ≤1.4  | ≤2.0  |
| Polarization dependent loss(dB)  | ≤0.20                                      | ≤0.25 | ≤0.30 | ≤0.30 | ≤0.30 | ≤0.35 |
| Return loss (dB)   | ≥55  |       |       |       |       |       |
| Directivity(dB)  | ≥55  |       |       |       |       |       |
| Operating temperature (°C)   | -40~+85                                    |       |       |       |       |       |
| Storage temperature(°C)  | -40~+85                                    |       |       |       |       |       |
| Fiber Type   | ITU-T G657 D or G657 A Fiber               |       |       |       |       |       |
| <b>Note1:</b> Focus on uniform distribution device; the fiber type is single-mode optical fiber. |  |       |       |       |       |       |
| <b>Note2:</b> All insertion loss values don't include the loss of the connector.                 |  |       |       |       |       |       |

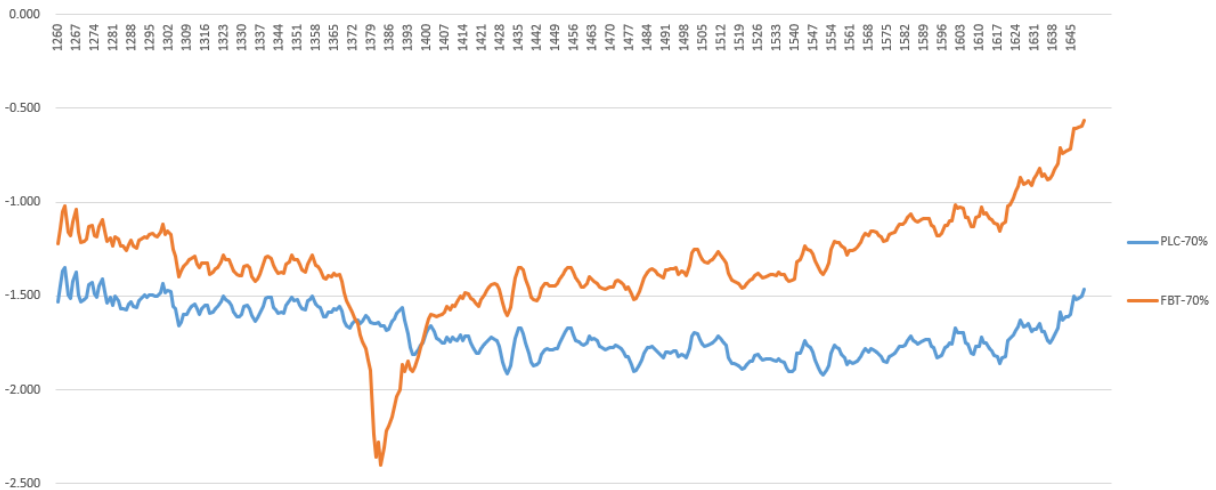
# MCR GROUP, INC.

## OTDR testing:

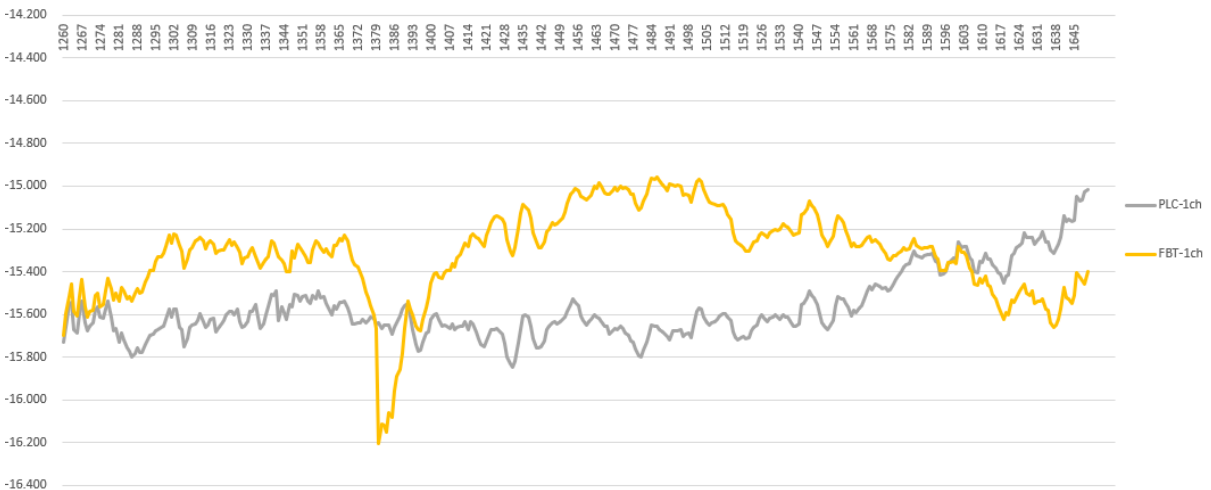


## OSA testing:

PLC and FBT 70%Port

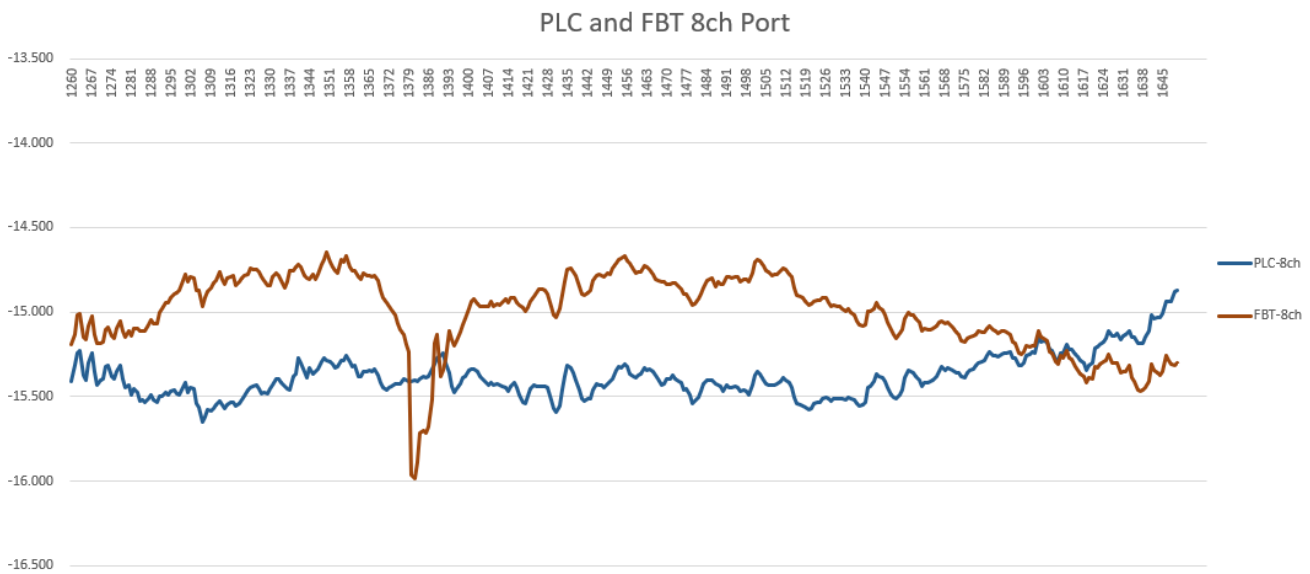
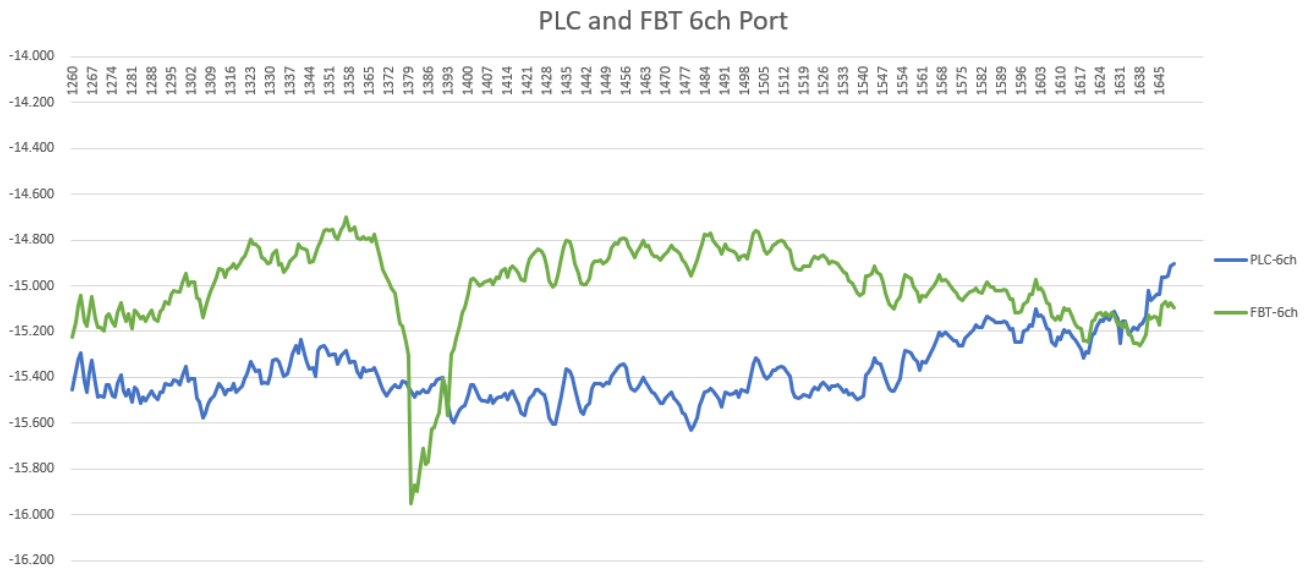


PLC and FBT 1ch Port



# MCR GROUP, INC.

## OSA testing:



## Production Line Display(clean room):

