

PLC Plug-in Cassette Splitter Specification

Application:

1x4/1x8/1x16/1x32/1x64 PLC Splitter Box package 130x100x25mm, PLC Splitter Cable Length 0.35+0.05/-0m, 5pcs or 9pcs Blue SC/UPC or SC/APC Adapter.

Feature:

- The loss is insensitive to the wavelength of light and can meet the transmission needs of different wavelengths.
- Uniform spectral distribution can evenly distribute signals to users.
- Compact structure, small size, can be directly installed in various existing junction boxes without leaving a large installation space.
- There are many branching channels for a single device, which can reach more than 32 channels.
- Multi channel has low cost, and the more branches there are, the more obvious the cost advantage.



Technical characteristics for splitter:

Model No.	MCR-Cassette SA 1x4/8			
Parameters	Symbol	Specifications		Unit
Channel Number	Ch	1X4	1X8	
Operation Wavelength		1260 ~ 1650		nm
Test Wavelength		1310/1550		nm
Spectral ratio		25%	12.5%	%
Insertion Loss ¹	IL	≤7.4	≤10.5	dB
Uniformity	Uni	≤0.8	≤1.0	dB
Polarization Dependent Loss	PDL	≤0.30	≤0.30	dB
Return Loss	RL	≥55		dB
Directivity ²	Dir	≥55		dB
Input Optic Power	P	100		mW
Fiber Type		G652D/ G657A fiber		
Input Length		0.35+0.05/-0		m
Output Length		0.35+0.05/-0		m
Connector Type		SC/UPC/APC		
Adapter Type		SC/UPC/APC Adapter		
Package Dimension (L) × (W) × (H)	PKG	(L) × (W) × (H)		mm
Operation Temperature	Top	130 × 100 × 25		°C
Storage Temperature	Tst	-10 ~ +70		°C

Note: All insertion loss values not include the loss of the connector.

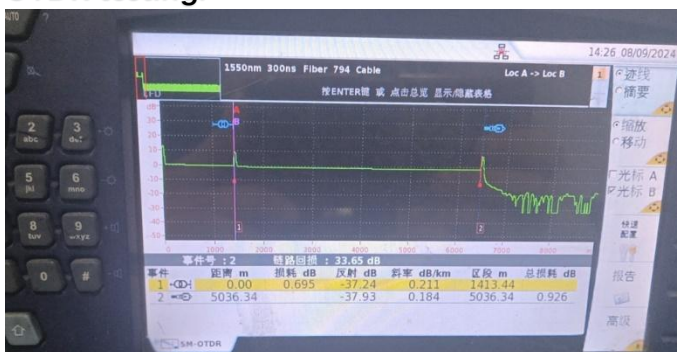
MCR GROUP, INC.

Technical characteristics for splitter:

Model No.	MCR-Cassette SA 1x16/32			
Parameters	Symbol	Specifications		Unit
Channel Number	Ch	1X16	1X32	
Operation Wavelength		1260 ~ 1650		nm
Test Wavelength		1310/1550		nm
Spectral ratio		6.25%	3.125%	%
Insertion Loss1	IL	≤13.7	≤17.2	dB
Uniformity	Uni	≤1.2	≤1.4	dB
Polarization Dependent Loss	PDL	≤0.30	≤0.35	dB
Return Loss	RL	≥55		dB
Directivity2	Dir	≥55		dB
Input Optic Power	P	100		mW
Fiber Type		G652D/ G657A fiber		
Input Length		0.35+0.05/-0		m
Output Length		0.35+0.05/-0		m
Connector Type		SC/UPC/APC		
Adapter Type		SC/UPC/APC Adapter		
Package Dimension (L) × (W) × (H)	PKG	(L) × (W) × (H)		mm
Operation Temperature	Top	130 × 100 × 50 or 130×100×100		°C
Storage Temperature	Tst	-10 ~ +70		°C

Note: All insertion loss values not include the loss of the connector.

OTDR testing:



Production Line Display(clean room):

