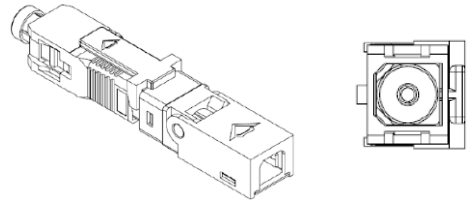
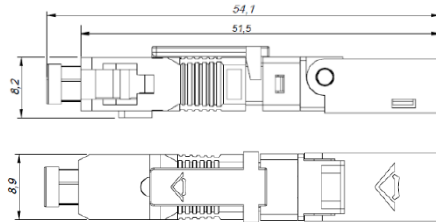


## Mechanical connector 3.0 optical field connector (flat)

### Features:

Quick assembly SC connector can provide quick and easy terminations of fibers in the field. It allows the installer to terminate and make connection in minutes at equipment and fiber patch panels. This connector system with features of high installation quality, high success rate and high reliability. Employ embedded fiber structure; the core part can be reused. Furukawa field optical connectors are developed for compact flat drop cables (3x2mm) with single-mode fibers and internal compact cables (2x1.6mm).

Application for making fiber optic cable field connectors in FTTX networks. Control the internal application of the area or junction box.



### Specifications

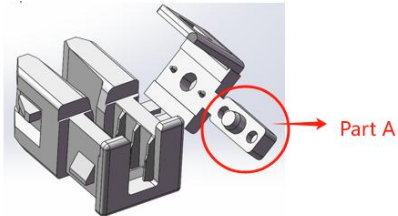
Model No.:	SC/SM 02 (3.0)
Storage temperature (° C)	-25 ° C to 75 ° C
Operating temperature (°C)	-25 ° C to 75 ° C
physical characteristics	Traction load: Drop Cable Low friction/fast and compact (3x2mm): 30N; Indoor micro cable (2x1.6): 20N.
Width*Height*depth (mm)	8.9*8.2*51.5
Fiber type	Single mode compatible with G.657 and G.652 fibers.
Polishing rate	SC-APC or SC-UPC
Insertion loss (dB)	Typical: 0.30 dB / maximum: 0.50 dB
Return loss (dB)	Minimum 50 dB
Comply	Comply with NTT – Nippon Telegraph and Telephone Corporation standards.
Note	The insertion loss and return loss were measured for lengths of 1310nm and 1550nm. If reused, the performance of on-site connectors cannot be guaranteed.
Including accessories	For each of the 10 field connector kits, there are(As shown in the following figure): 10 pcs cable supports (3x2 mm and 2x1.6mm); 1 manual; 1 Gabarito to assemble the connector; 1 Fiber optic insertion guide.  <b>The test report is under request.</b>



# MCR GROUP, INC.

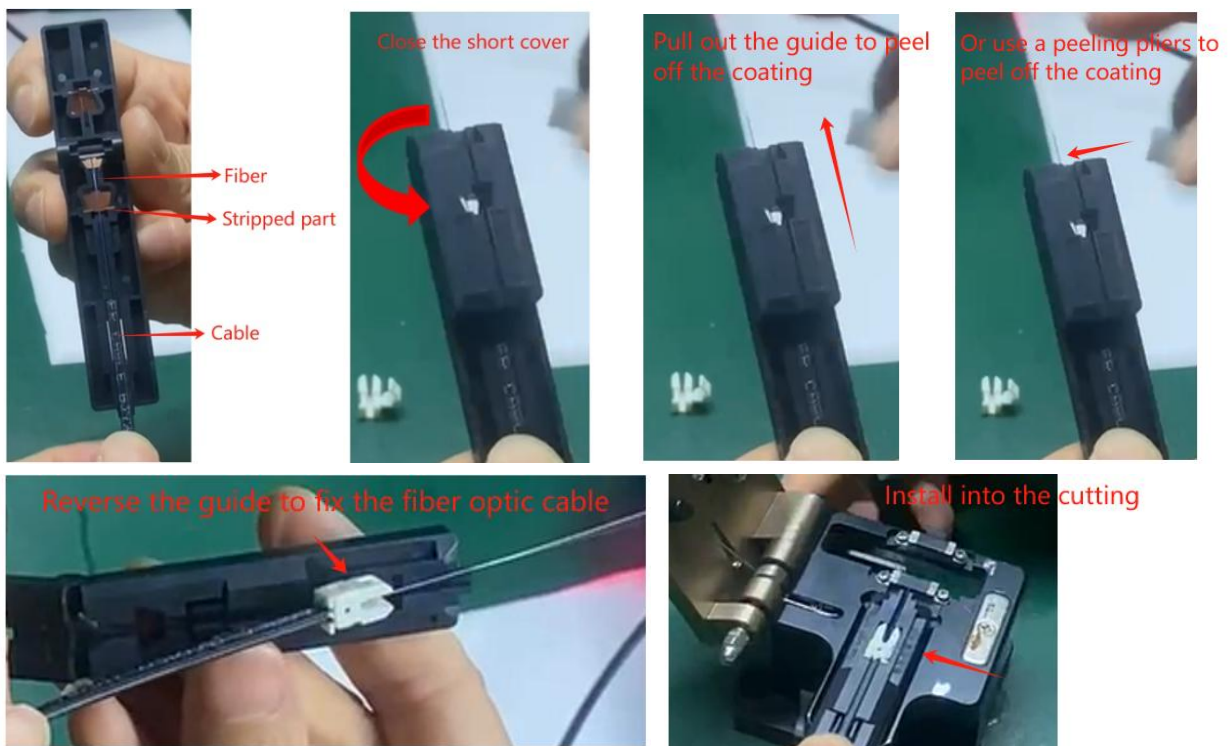
## Using Accessories in the kits:

1. Cable supports (3x2 mm and 2x1.6mm)



- a. Remove part A when combining 3 \* 2mm cables.
- b. Close part A when combining 2 \* 1.6mm cables.

2. Fiber optic insertion guide (Can be used to measure length and peel off coatings).



3. Assemble the connector



## Production Line Display(clean room):

