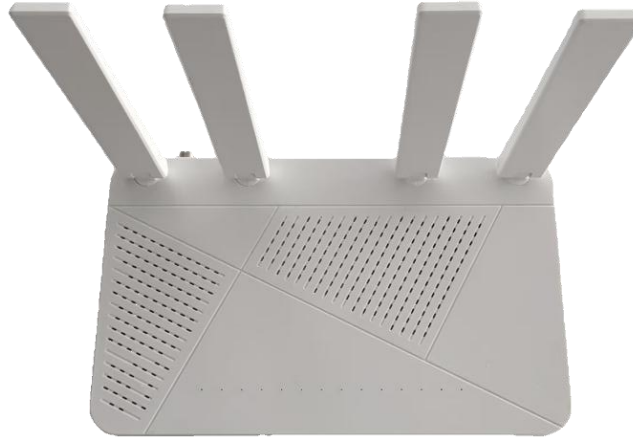


XPON ONU product WIFI6 R4 AX3 Series

MCR ONU-W6-R4



Description:

The Optical network unit (Optical Network Unit, ONU) is a user-side device in the PON network, which provides users with access services for data and other services. The main function of the ONU device is to receive an optical signal in the downward direction and convert it into an Ethernet message to the user, and to convert the Ethernet message received from the user device or the network into an optical signal and transmit it to the upper network through the PON network.

R4 AX3 Series is the product uses passive optical network (PON) technology, which is better than the traditional access products in cost performance, maintainability, scalability and many other aspects.

The R4 AX3000 series offers four gigabit network ports (optional), dual-band WIFI, one VOIP interface (optional) and a CATV RF interface (optional). The bottom disc fiber structure design, simplify the fiber installation and maintenance process, can be placed desktop or wall installation, easily adapt to a variety of scene styles.

Feature:

- Supports the EPON / GPON mode automatic switching
- Support the HGU function
- Support PPPoE / DHCP / static IP routing mode and bridge mode
- IPV 4 and IPV 6 dual mode
- Support 2.4G / 5G dual-frequency WIFI and multi-SSID function
- Support for both LAN IP and DHCP Server configurations
- Support for ports mapping and loop detection
- Supports 4 * 10 / 100 / 1000M network adaptation
- Support for firewall functions and ACL functions
- Support for the IGMP Snooping / Proxy multicast features
- Support for TR 069 remote configuration and maintenance
- Support for one-way CATV RF RF (optional)
- Support for VOIP (optional)
- Optional 4 / 2 Gigabit network ports

MCR GROUP, INC.

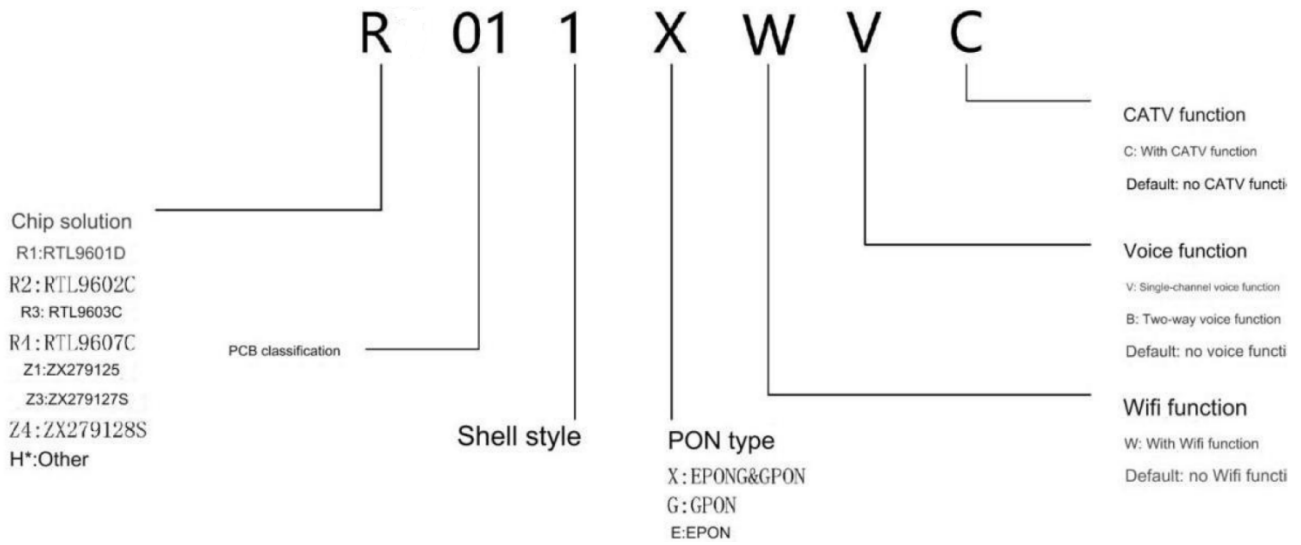
Specifications:

Project	Type	Technical parameter
PON	*interface type	No CATV: SC / UPC With a CATV: SC / APC
	receiving sensitivity	≤-27dBm
	Luminescence power	+1~+4dBm
	transmission distance	20KM
	operating wavelength	TX: 1310nm RX: 1490nm
*CATV	The central wavelength	1550nm
	Input light power	+2~-15dBm
	reflection loss of light	> 45dBm
	frequency range	47-1006MHz
	plainness	±1dBm (47-1006MHz)
	output level	≥80dBuv(0~-12dB)
	output impedance	75Ω
	AGC	0~-12dBm
	carrier-to-noise ratio	≥51dB
	CTB	≥65dB
	CSO	≥62dB
*LAN	interface type	4 Gigabit RJ 45 interfaces
	transmission mode	10 / 100 / 1000M bps adaptive
*Wi-Fi	protocol	IEEE802.11a/b/g/n/ac/ax
	antenna	2.4GHz 2*2,5GHz 2*2,5 dBi antenna, with rates up to 3000Mbps
	other	Support multiple SSID, encryption mode: WEP-64 / WEP-128 / WPA/WPA2/WPA3
Power related	joggle	DC005 φ2.1mm
	voltage	12V 2 A
	rated dissipation	≤ 15 W
Environmental correclation	working temperature	0~+50°C
	Working humidity	10~85% (no condensation)
	Storage temperature	-30~+60°C
Size weight	product size	240 * 150 * 30mm (excluding antenna and bottom feet)
	packing measurement	366* 184*60mm
	Net weight of products	0. 48 KG
	total weight	0. 73 KG

*** The above functions can be selected.

MCR GROUP, INC.

Order Guide:



For example: MCR ONU-W6-R4011XWVC-AX3

According to the model, this ONU is a product with wifi, voice and CATV functions of XPON using RTL9607x master control scheme.