

H Optic (SC/APC) Cable Assemblies Specification



Application:

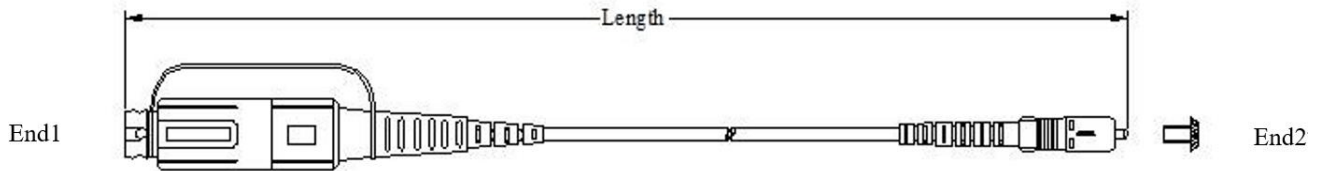
- FTTH.
- Outdoor Areas.
- Harsh Environment.

Features:

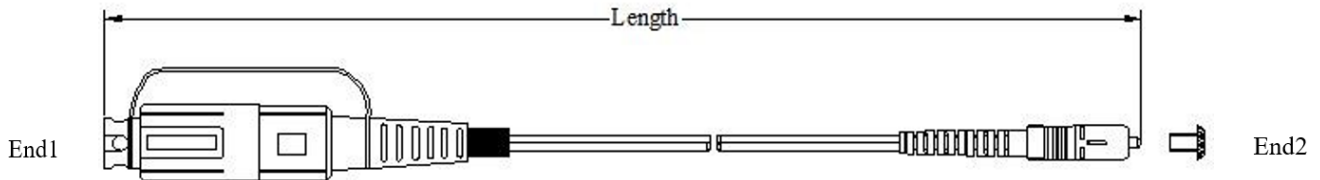
- Cost effective solution for in house termination.
- Low insertion loss and added loss.
- Height of attenuation.
- IP67 water, dust proof and corrosion resistant
- The material in the jumpel cable are all-weather and UV-resistant.
- Mechanical performance: IEC 61754-4 standard.
- RoHS and REACH materials compliant.
- Cable diameter Range: 2.0*3.0mm, 2.0*5.0mm, 3.0mm, 5.0mm to 4.0* 7.0mm.

Dimensional Diagrams:

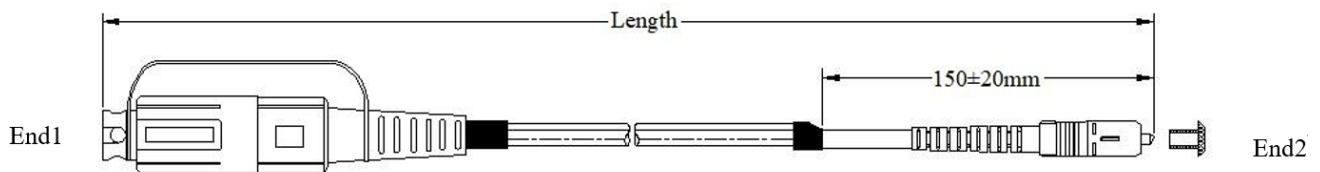
1.H optic (SC/APC) 3.0mm Cable Assemblies



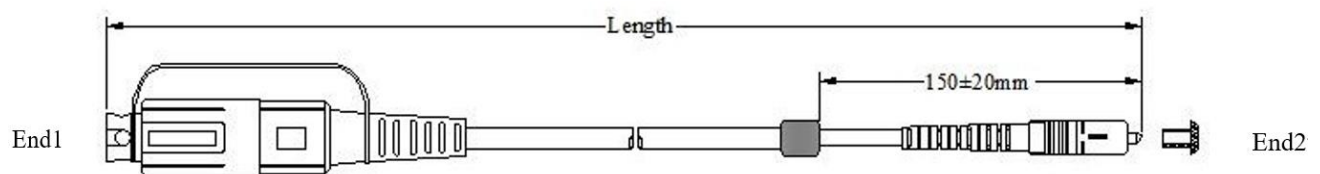
2.H optic (SC/APC) 2.0*3.0mm Cable Assemblies



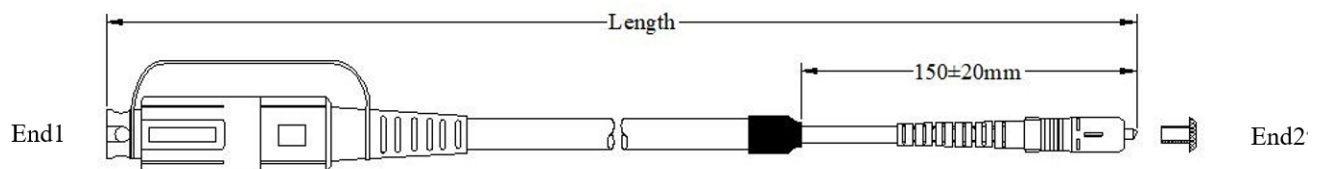
3.H optic (SC/APC) 2.0*5.0mm Cable Assemblies



4.H optic (SC/APC) 5.0mm Cable Assemblies



5. H optic (SC/APC) 4.0*8.0mm Cable Assemblies

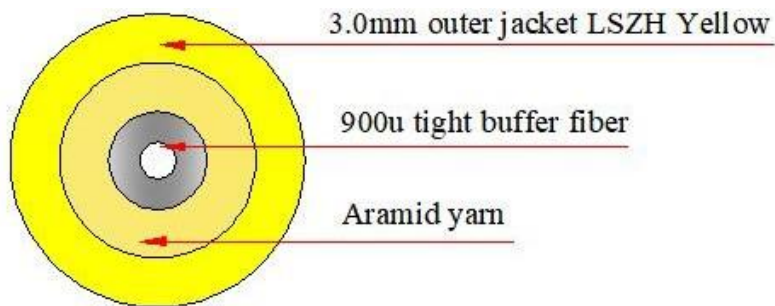


MCR GROUP, INC.

Patch cord versions

Jumper tolerance requirement	
Overall length (L) (M)	length of tolerance (CM)
$0 < L \leq 20$	+10/-0
$20 < L \leq 40$	+15/-0
$L > 40$	+0.5%L/-0

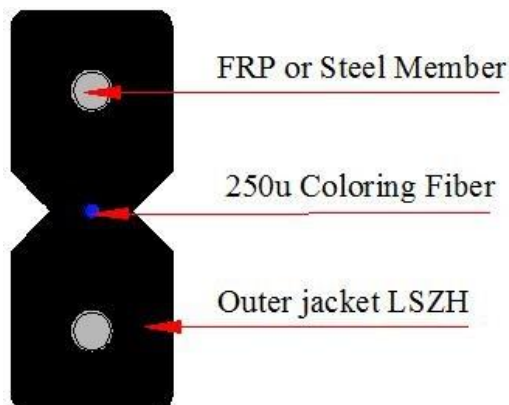
Cable Structure



Cable Parameters

Cable Count	Out sheath Diameter (MM)	Weight (KG)	Minimum allowable Tensile Strength (N)		minimum allowable Crush Load (N/100mm)		Minimum Bending Radius (MM)		Storage temperature (°C)
			Short term	long term	Short term	long term	Short term	long term	
1	3.0±0.1	6.5	450	200	500	100	20D	10D	-20 ~ +60

Cable Structure



MCR GROUP, INC.

Cable Parameters

Cable Count	Out sheath Diameter (MM)	Weight (KG)	Minimum allowable Tensile Strength (N)		minimum allowable Crush Load (N/100mm)		Minimum Bending Radius (MM)		Storage temperature (°C)
			short term	long term	short term	long term	short term	long term	
1	$(2.0 \pm 0.1) \times (3.0 \pm 0.2)$	8	100	50	500	100	20D	10D	-20 ~ +60

Cable Structure

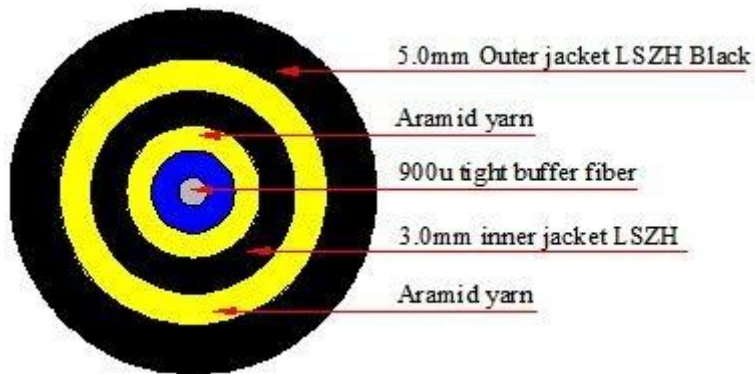


Cable Parameters

Cable Count	Out sheath Diameter (MM)	Weight (KG)	Minimum allowable Tensile Strength (N)		minimum allowable Crush Load (N/100mm)		Minimum Bending Radius (MM)		Storage temperature (°C)
			short term	long term	short term	long term	short term	long term	
1	$(2.0 \pm 0.2) \times (5.0 \pm 0.3)$	21.7	400	200	2200	1000	20D	10D	-20 ~ +60

MCR GROUP, INC.

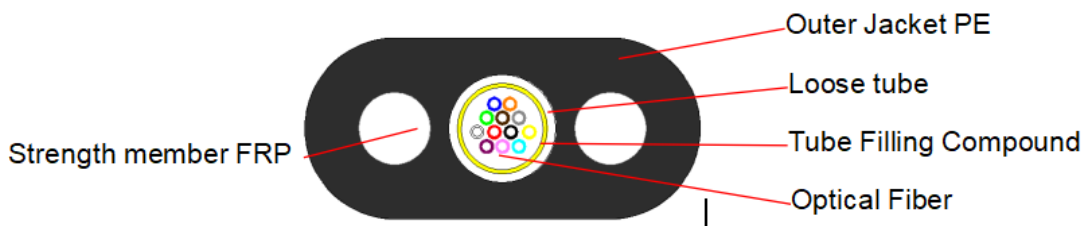
Cable Structure



Cable Parameters

Cable Count	Out sheath Diameter (MM)	Weight (KG)	Minimum allowable Tensile Strength (N)		minimum allowable Crush Load (N/100mm)		Minimum Bending Radius (MM)		Storage temperature (°C)
			short term	long term	short term	long term	short term	long term	
1	5.0±0.2	26.5	800	400	2000	1000	20D	10D	-20~ +60

Cable Structure



Cable Parameters

Cable Count	Out sheath Diameter (MM)	Weight (KG)	Minimum allowable Tensile Strength (N)		minimum allowable Crush Load (N/100mm)		Minimum Bending Radius (MM)		Storage temperature (°C)
			short term	long term	short term	long term	short term	long term	
1	(4.0±0.2)x(8.0±0.2)	42	1350	400	2200	1000	20D	10D	-20~ +60

MCR GROUP, INC.

Optical Characteristics

Item	Parameter				Reference
	Single mode		Multimode		
	Standard	Elite	Standard	Elite	
Insertion loss	Typical $\leq 0.30\text{dB}$ Max $\leq 0.75\text{dB}$	Typical $\leq 0.15\text{dB}$ Max $\leq 0.35\text{dB}$	Typical $\leq 0.50\text{dB}$ Max $\leq 0.25\text{dB}$	Typical $\leq 0.10\text{dB}$ Max $\leq 0.35\text{dB}$	IEC 61300-3-34
Return loss	$\geq 50\text{dB}$ (PC) $\geq 60\text{dB}$ (APC)	$\geq 55\text{dB}$ (PC) $\geq 65\text{dB}$ (APC)	$\geq 30\text{dB}$ (PC)	$\geq 30\text{dB}$ (PC)	IEC 61300-3-6